

# Fire Department – Cardiac Arrest Outcomes (CARES 2025)

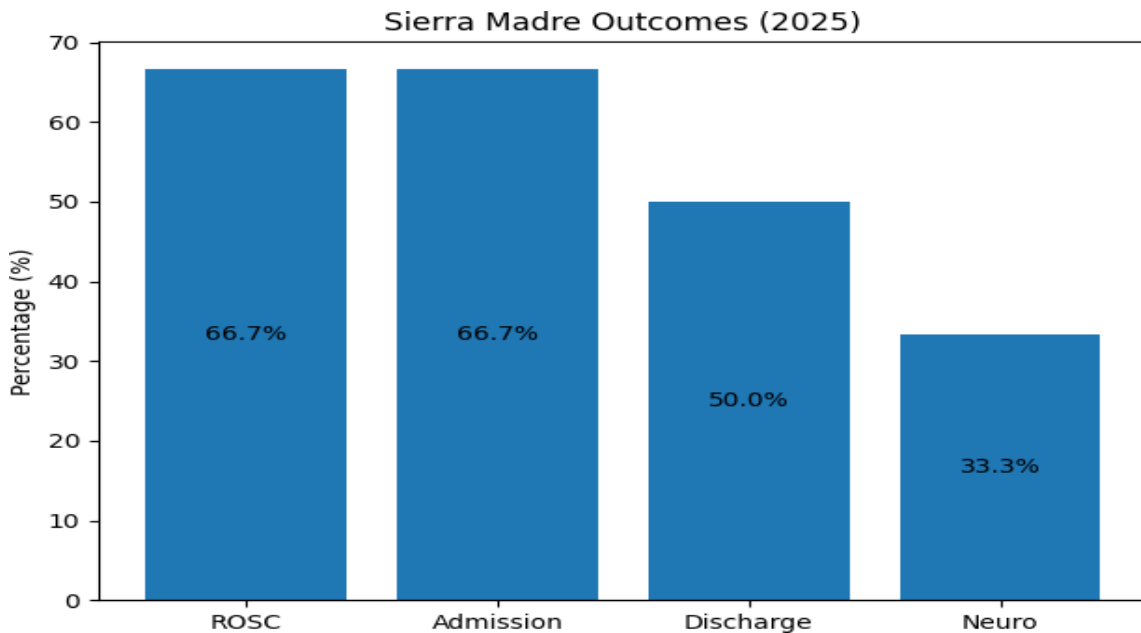
## BACKGROUND

The Sierra Madre Fire Department received its 2025 Cardiac Arrest Registry to Enhance Survival (CARES) report from the Los Angeles County Emergency Medical Services (EMS) Agency in partnership with the national CARES registry. Return of Spontaneous Circulation (ROSC) refers to the restoration of a sustained heartbeat after cardiac arrest. Utstein refers to a standardized subset of cardiac arrest cases, typically witnessed arrests with a shockable rhythm. Achieving this metric signifies the delivery of perfect, high-quality, and immediate chain-of-survival actions (CPR and defibrillation), reducing mortality by ensuring the best possible care for the most treatable patients.

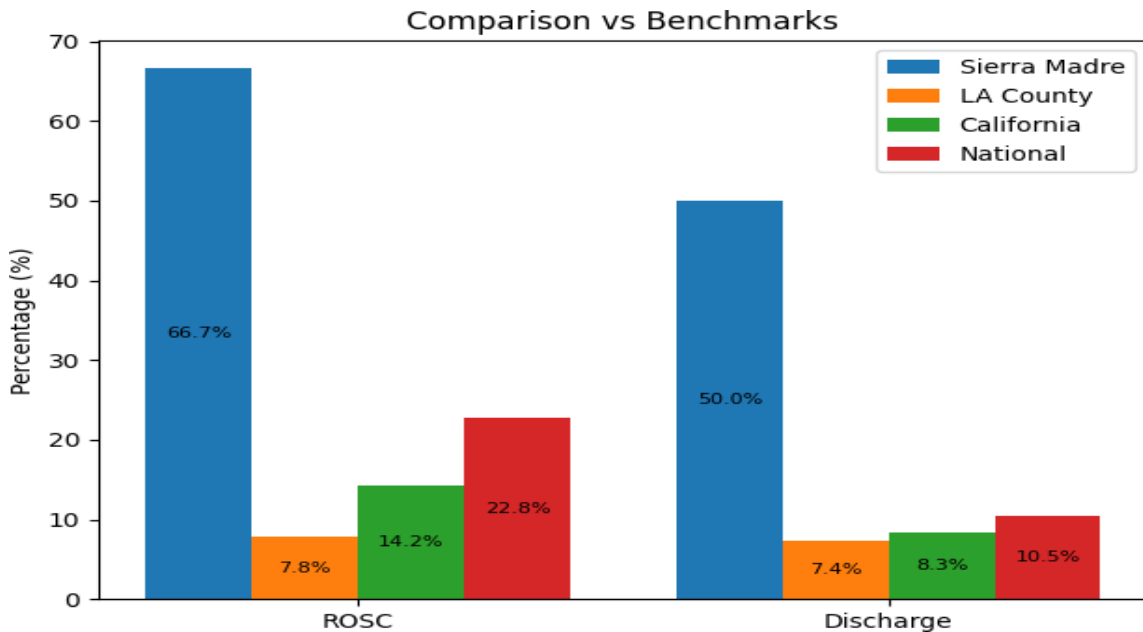
## SUMMARY OF PERFORMANCE

Despite a small number of cardiac arrest incidents in 2025, Sierra Madre paramedics delivered exceptional, high-quality care, resulting in survival outcomes that significantly exceeded county, state, and national averages. These results reflect the department’s commitment to rapid response, clinical excellence, and patient-centered care. The data demonstrates that when residents experience a cardiac emergency, they receive some of the highest-performing prehospital care in the region.

## ANALYSIS – OUTCOMES



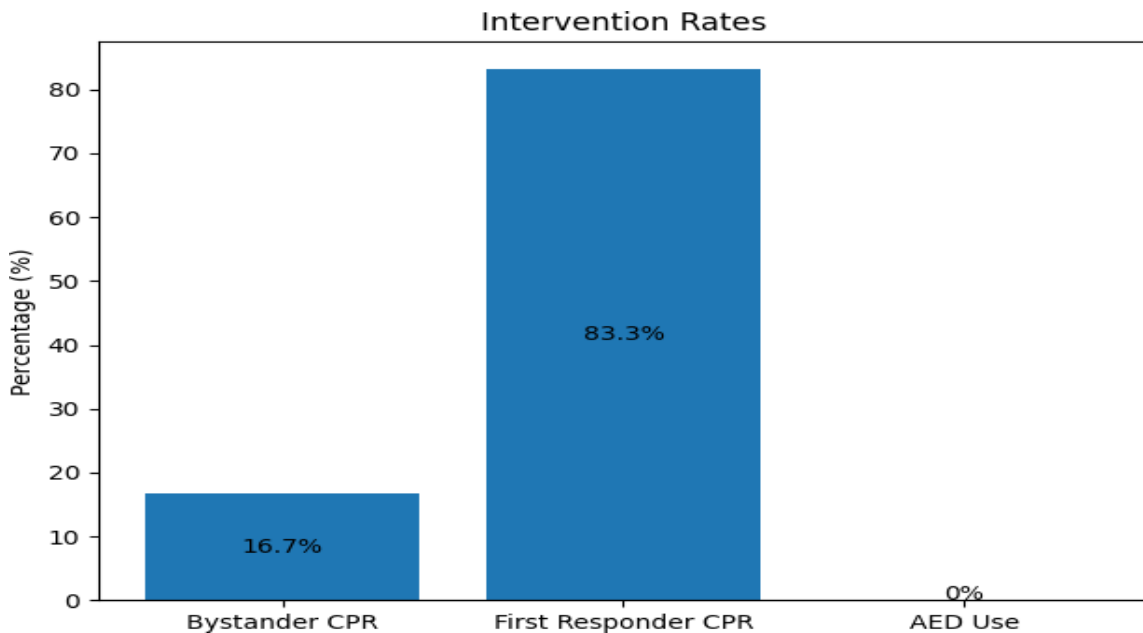
The chart above illustrates the continuum of care from initial resuscitation through recovery. Sierra Madre paramedics achieved a 66.7% ROSC rate and a 50% survival-to-discharge rate—far exceeding typical benchmarks. Importantly, 33.3% of patients survived with good neurological function, enabling them to return to a meaningful quality of life. These outcomes highlight the effectiveness of early, aggressive, and skilled advanced life support interventions provided in the field.



## ANALYSIS – BENCHMARK COMPARISON

Compared with Los Angeles County, California, and national data, Sierra Madre's performance stands out as exceptional. Local ROSC and survival rates are multiple times higher than those of surrounding systems. This level of performance reflects the training, experience, and coordination of Sierra Madre's paramedic personnel, as well as the effectiveness of the City's emergency medical response system.

## ANALYSIS – COMMUNITY RESPONSE



The data also highlights the critical role of early intervention in cardiac arrest survival. While first responders-initiated CPR in most cases, bystander CPR and AED use remain limited. This presents an opportunity to further strengthen the community's role in the chain of survival through public education, training, and expanded access to lifesaving equipment.

## **CONCLUSION**

The 2025 CARES report demonstrates that Sierra Madre paramedics are delivering exceptional, life-saving care that produces outcomes well above regional and national averages. These results underscore the value of the City's investment in advanced life support services and reflect the professionalism and dedication of its fire personnel. Continued focus on community engagement and early intervention will further enhance these already outstanding outcomes.